



## RFA3120-2-10

### RF Driver / Amplifier

(Phase Delayed – Dual Output)



0221

The Model RFA3120-2 Deflector Driver is a class A solid-state RF source designed to drive *ISOMET* beam steered Acousto-Optic Scanners with up to 20 Watts total power across a 40MHz bandwidth in the frequency range of 90 to 140MHz.

The driver control signals include 0 to +10 volt frequency tuning input and 0 to +10 volt amplitude modulation input. Each output delivers > 10 Watt RF. Maximum gain is externally adjustable via a pre-set potentiometer. The start frequency is also adjustable and is set by the frequency offset potentiometer (FOS). An internal delay line introduces the correct phasing between the RF outputs, specific to the AO deflector. The base plate is water cooled.

#### SPECIFICATION

Oscillator Type:	Varactor-tuned thin film hybrid
Power Output, total (X1 + X2):	>20 Watts CW maximum into 50Ω
Phase delay between outputs:	AO deflector dependant
Load VSWR:	< 2.5:1 for best results
Output RF Power Variation vs.Freq:	≤ 1 dB
Spurious Outputs:	Harmonics > 20dB below fundamental
Tuning Range:	90-130MHz , 100-140MHz (FOS defines)
Tuning Voltage (Vt):	0 to 10V for specified tuning range
Frequency Offset range (FOS):	+/- 20MHz minimum
Tuning Linearity:	+/- 1.5% over specified tuning range
Tuning Voltage Impedance:	1Kohm (nominal)
Tuning Slew Rate	> 10 MHz/μs
Residual FM:	< 10 KHz peak-to-peak
Frequency Stability:	±0.25%
Video Input Voltage (MOD):-	
Analogue:	0-10V for 100% depth of modulation, DC coupled
Input Impedance:	600 ohm (nominal)
RF ON-OFF Ratio:	> 37 dB
RF Amplitude rise/fall time	< 50nsec
DC Power Input:	+24Vdc at <5A regulated to ± 0.25%
Temperature Range:	0°C to 50°C ambient, temperature at mounting face must not exceed 60°C. Water cooling available.
Power Input	: Filtered screw terminal

#### ALL SPECIFICATIONS SUBJECT TO CHANGE WITHOUT NOTICE

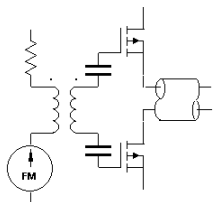
ISOMET CORP, 10342 Battlevue Parkway, Manassas, VA 20109, USA.

Tel: (703) 321 8301 Fax: (703) 321 8546

E-mail: [ISOMET@ISOMET.COM](mailto:ISOMET@ISOMET.COM) Web Page: [WWW.ISOMET.COM](http://WWW.ISOMET.COM)

#### Quality Assured.

In-house: RF & Digital design  
Software Development  
OEM manufacture



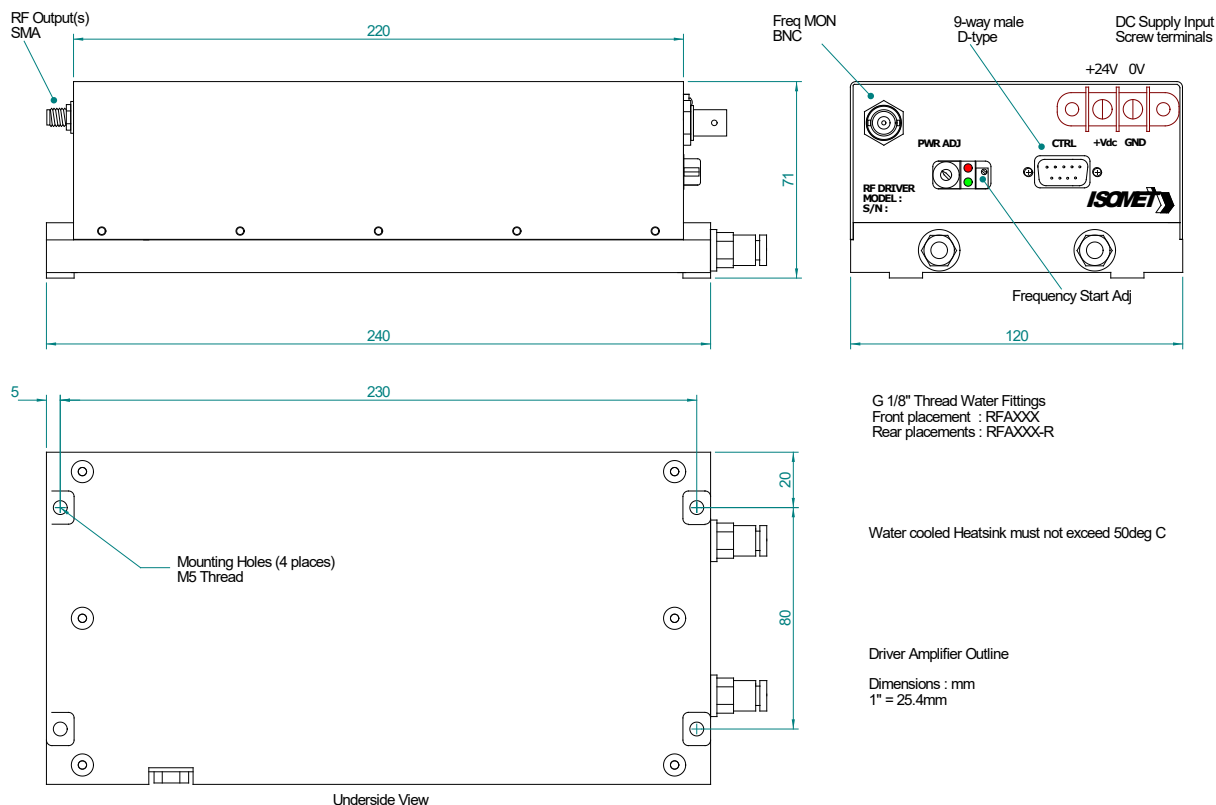
# RFA3120-2-10

## RF Driver / Amplifier (Phase Delayed – Dual Output)



0221

### OUTLINE DRAWING



Control signals	-	:	9 pin 'D' type
Tuning Voltage		:	+sig pn1, -rtn pn6
Amplitude Control		:	+sig pn8, -rtn pn3
Interlock Control (Contact / Low = On)		:	+sig pn9, -rtn pn4
Digital Gate (NC or High = On)		:	+sig pn7, -sig pn2

**Options –x**, multiple combinations possible:

- BR : Brass water cooled heatsink (water fittings on RF output face)

**Refer application note AN1906 regarding Coolant Specification**

**ALL SPECIFICATIONS SUBJECT TO CHANGE WITHOUT NOTICE**  
ISOMET CORP, 10342 Battlevue Parkway, Manassas, VA 20109, USA.  
Tel: (703) 321 8301 Fax: (703) 321 8546  
E-mail: [ISOMET@ISOMET.COM](mailto:ISOMET@ISOMET.COM) Web Page: [WWW.ISOMET.COM](http://WWW.ISOMET.COM)

**Quality Assured.**  
**In-house: RF & Digital design**  
**Software Development**  
**OEM manufacture**